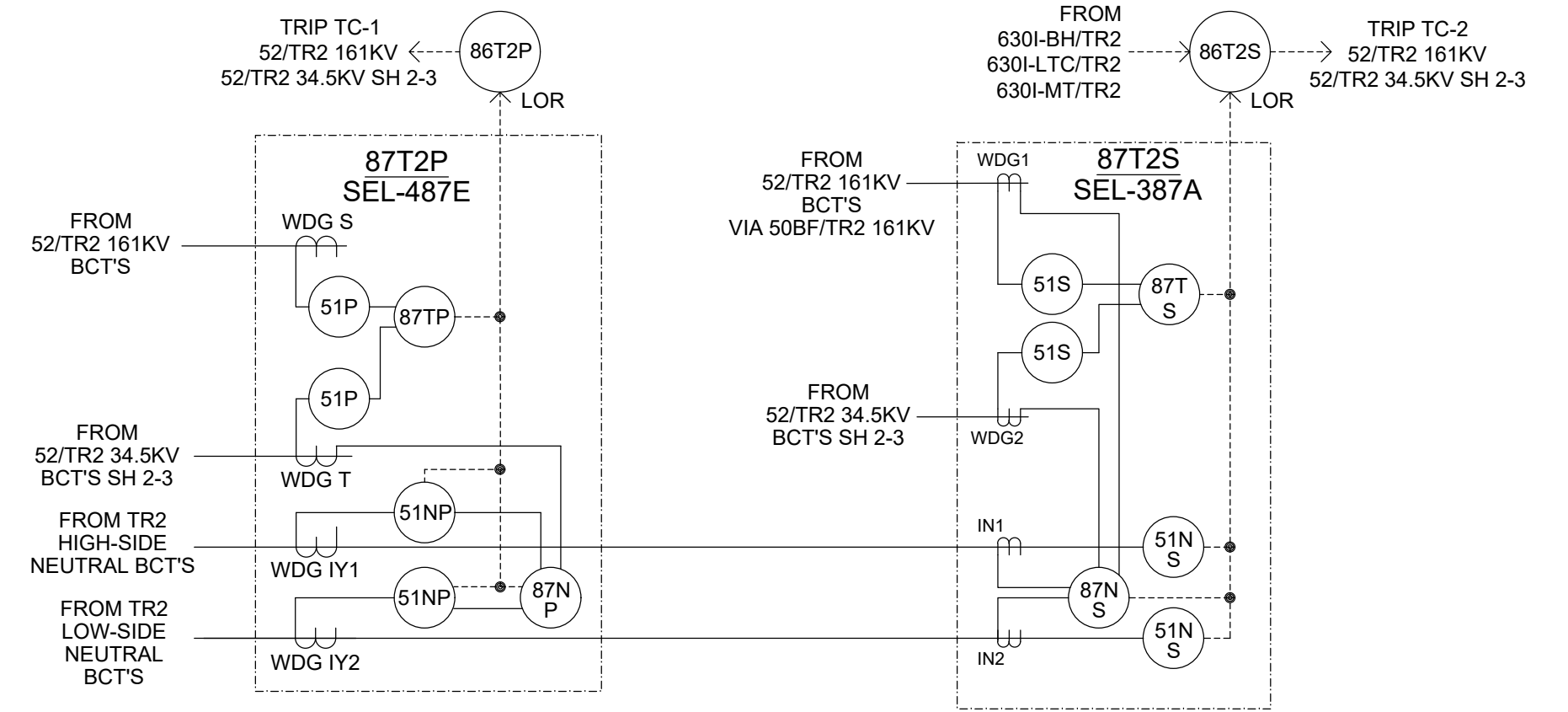
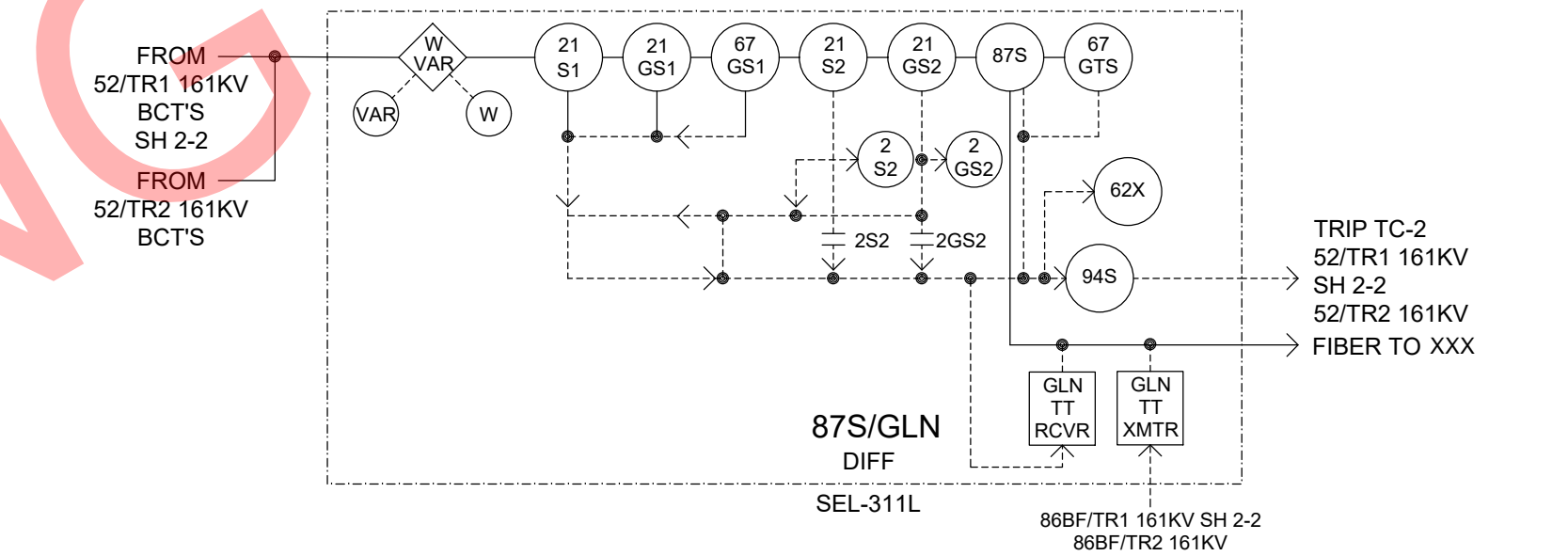
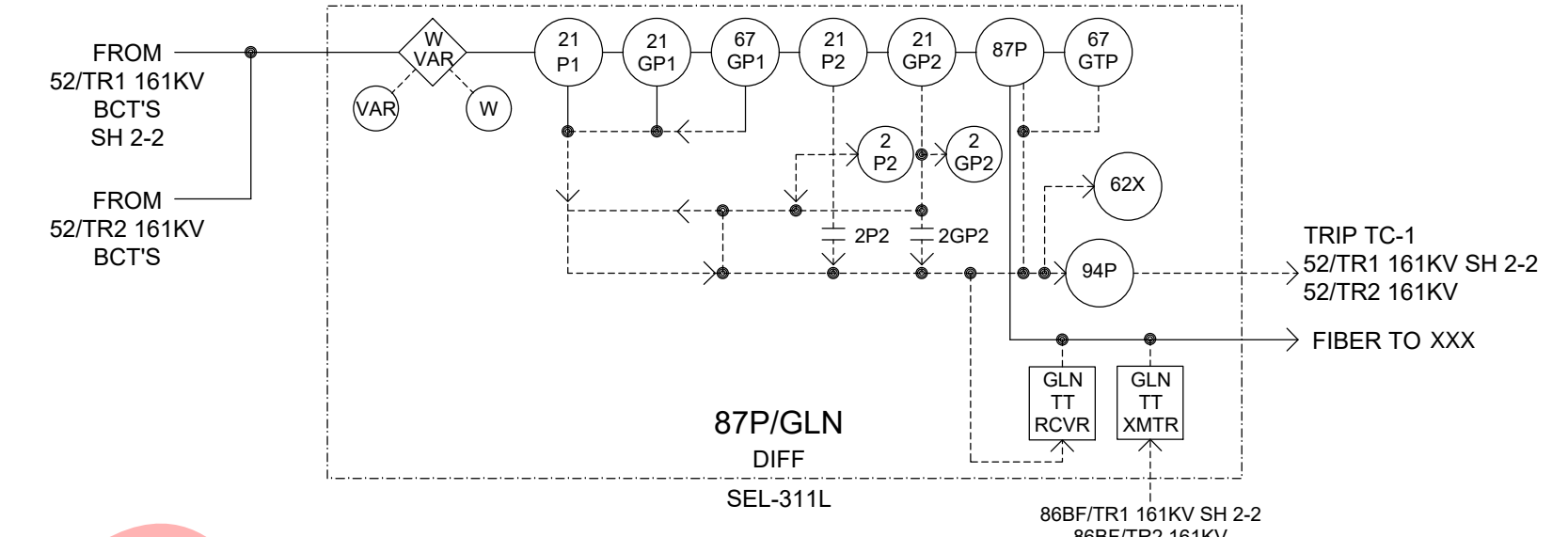
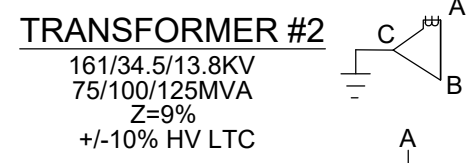
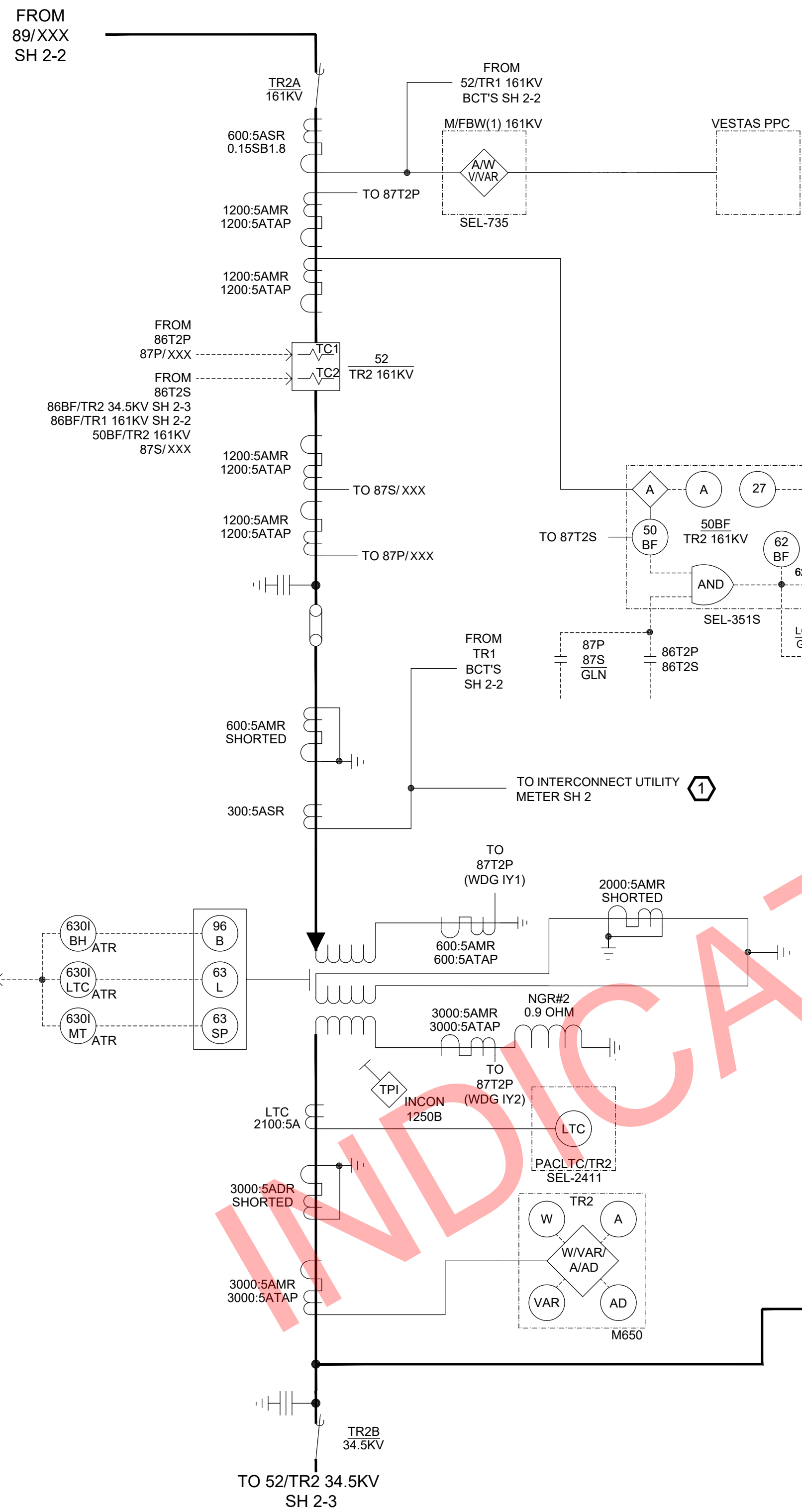


A B C D E F G H I J

KEY NOTES:

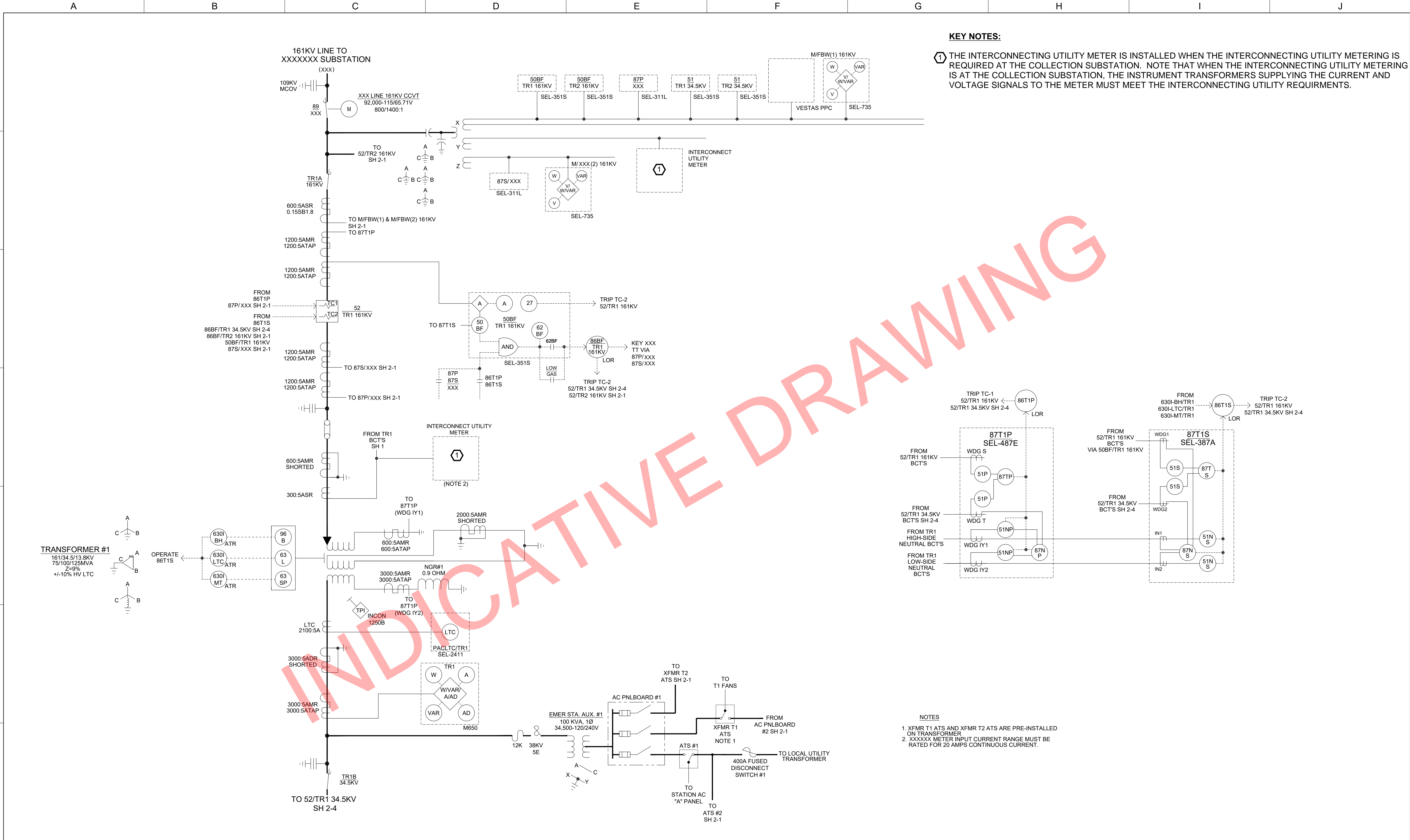
1 THE INTERCONNECTING UTILITY METER IS INSTALLED WHEN THE INTERCONNECTING UTILITY METERING IS REQUIRED AT THE COLLECTION SUBSTATION. NOTE THAT WHEN THE INTERCONNECTING UTILITY METERING IS AT THE COLLECTION SUBSTATION, THE INSTRUMENT TRANSFORMERS SUPPLYING THE CURRENT AND VOLTAGE SIGNALS TO THE METER MUST MEET THE INTERCONNECTING UTILITY REQUIREMENTS.



NOTES
 1. XFMR T1 ATS AND XFMR T2 ATS ARE PRE-INSTALLED ON TRANSFORMER

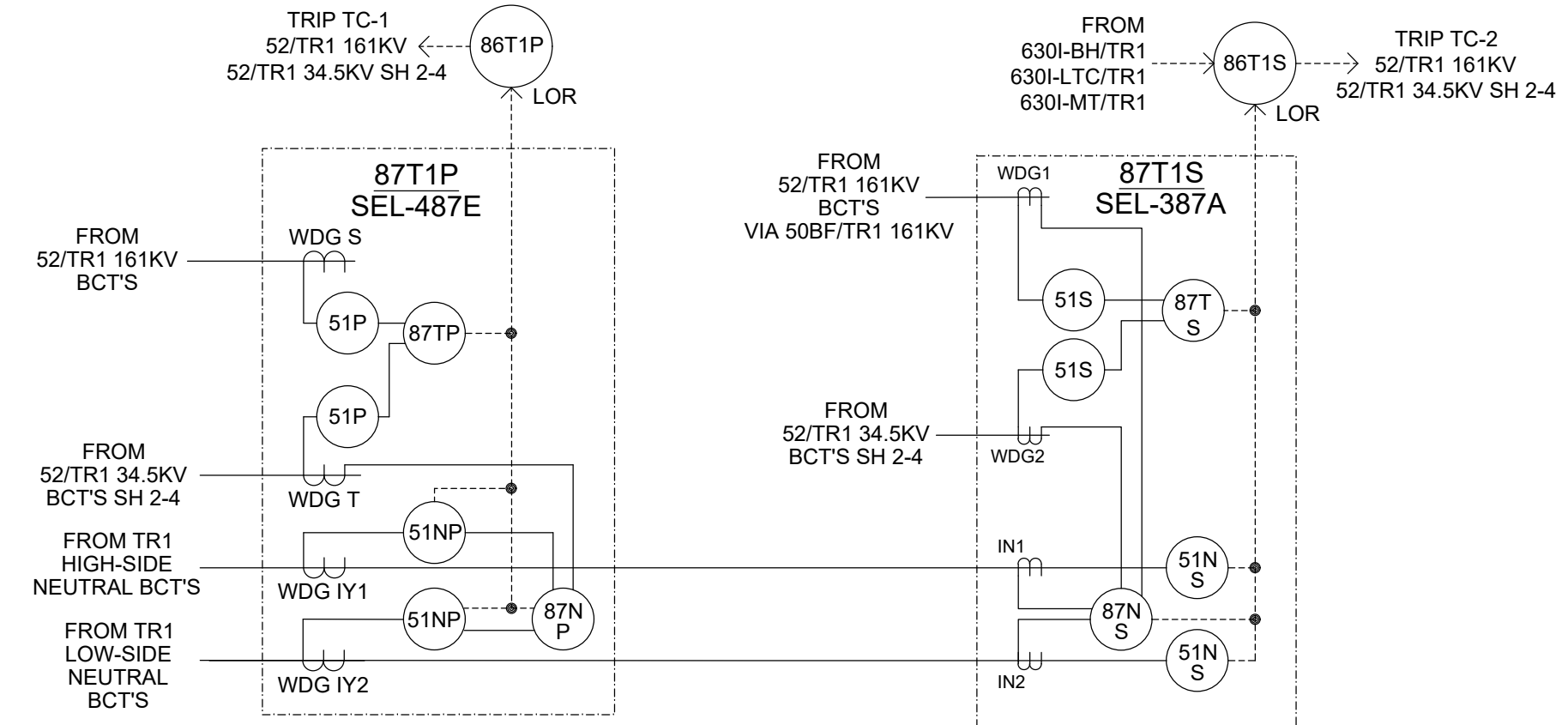
NO	REVISION	ZONE	DATE	BY	CHK	ENG	NO	REVISION	ZONE	DATE	BY	CHK	ENG	REFERENCE DRAWINGS			 NORTHERN STATES POWER COMPANY XXXXXX WIND FARM XXXXXX COUNTY, MINNESOTA	THIS MAP/DOCUMENT IS A TOOL TO ASSIST EMPLOYEES IN THE PERFORMANCE OF THEIR JOBS. YOUR PERSONAL SAFETY IS PROVIDED FOR BY USING SAFETY PRACTICES, PROCEDURES, AND EQUIPMENT AS DESCRIBED IN THE SAFETY TRAINING PROGRAMS AND MANUALS.	UNIT 0 COLLECTOR SUBSTATION CONTROL 161KV-34.5KV TRANSFORMER #2 METERING AND RELAYING DIAGRAM	REV
														DWG NO.	MANUFACTURER	DESCRIPTION				
	REV. A - ISSUED FOR REVIEW: 8-9-21																			

INDICATIVE DRAWING



KEY NOTES:

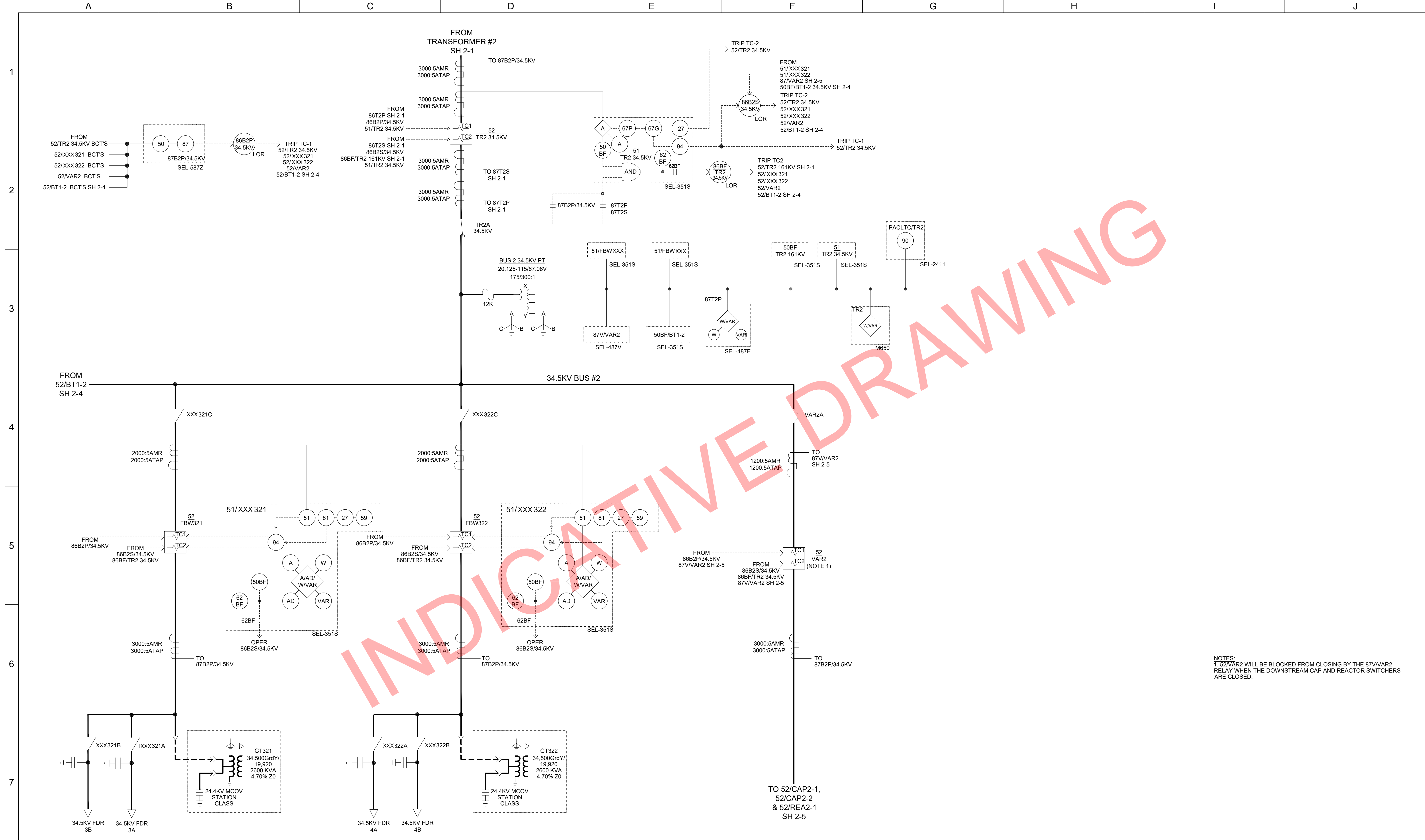
① THE INTERCONNECTING UTILITY METER IS INSTALLED WHEN THE INTERCONNECTING UTILITY METERING IS REQUIRED AT THE COLLECTION SUBSTATION. NOTE THAT WHEN THE INTERCONNECTING UTILITY METERING IS AT THE COLLECTION SUBSTATION, THE INSTRUMENT TRANSFORMERS SUPPLYING THE CURRENT AND VOLTAGE SIGNALS TO THE METER MUST MEET THE INTERCONNECTING UTILITY REQUIREMENTS.



NOTES
 1. XFMR T1 ATS AND XFMR T2 ATS ARE PRE-INSTALLED ON TRANSFORMER
 2. XXXXXX METER INPUT CURRENT RANGE MUST BE RATED FOR 20 AMPS CONTINUOUS CURRENT.

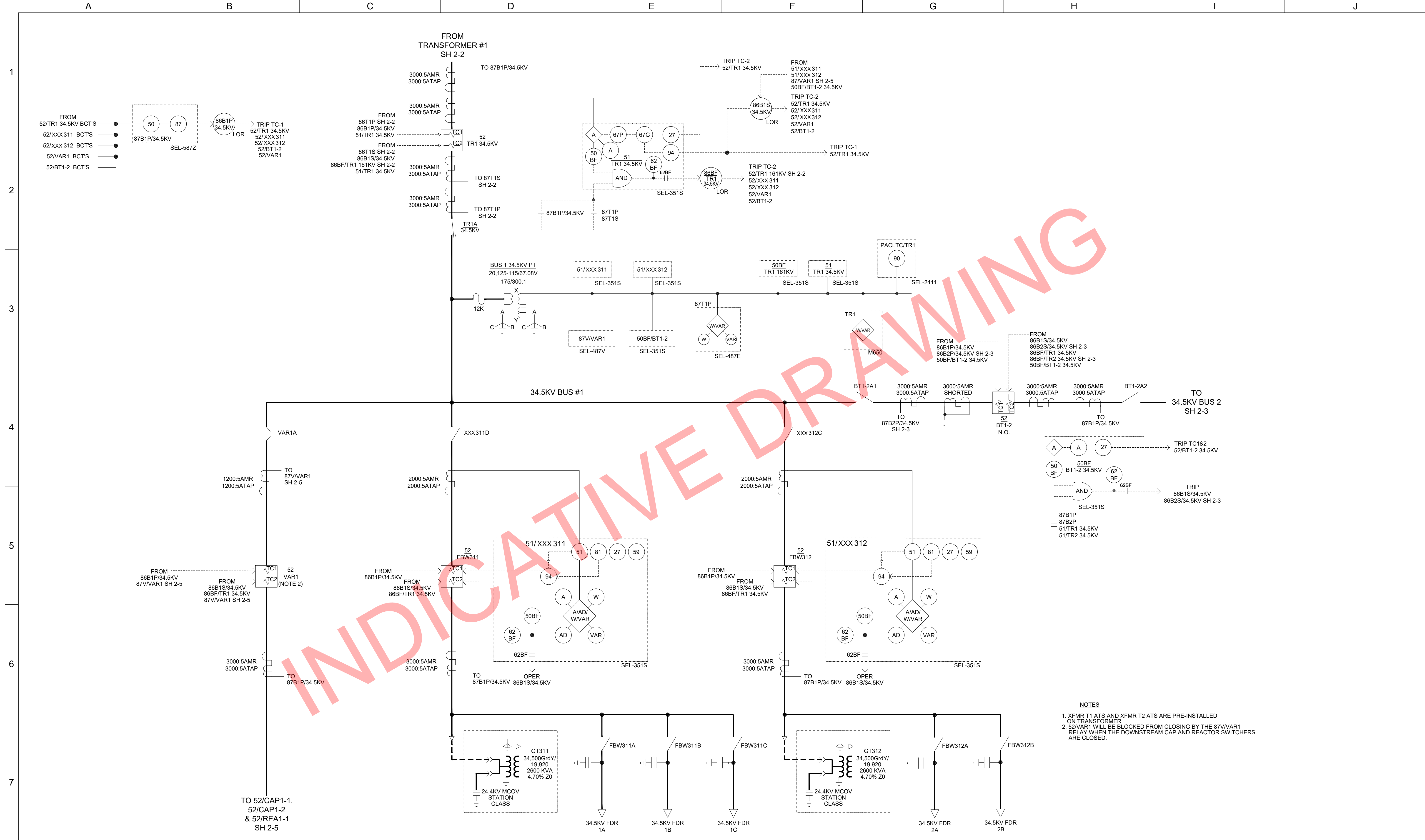
NO	REVISION	ZONE	DATE	BY	CHK	ENG	NO	REVISION	ZONE	DATE	BY	CHK	ENG	REFERENCE DRAWINGS			XcelEnergy® NORTHERN STATES POWER COMPANY XXXXXXX WIND FARM XXXXXXX COUNTY, MINNESOTA	THIS MAP/DOCUMENT IS A TOOL TO ASSIST EMPLOYEES IN THE PERFORMANCE OF THEIR JOBS. YOUR PERSONAL SAFETY IS PROVIDED FOR BY USING SAFETY PRACTICES, PROCEDURES, AND EQUIPMENT AS DESCRIBED IN THE SAFETY TRAINING PROGRAMS AND MANUALS.	UNIT 0 COLLECTOR SUBSTATION CONTROL 161KV-34.5KV TRANSFORMER #1 METERING AND RELAYING DIAGRAM
														DWG NO.	MANUFACTURER	DESCRIPTION			
	REV. A - ISSUED FOR REVIEW: 8-9-21																		

ENERGY SUPPLY ENGINEERING & CONSTRUCTION
 NH-XXXXX-2-2



NOTES:
 1. 52/VAR2 WILL BE BLOCKED FROM CLOSING BY THE 87/V/VAR2 RELAY WHEN THE DOWNSTREAM CAP AND REACTOR SWITCHERS ARE CLOSED.

NO	REVISION	ZONE	DATE	BY	CHK	ENG	NO	REVISION	ZONE	DATE	BY	CHK	ENG	REFERENCE DRAWINGS			 NORTHERN STATES POWER COMPANY XXXXXXX WIND FARM XXXXXX COUNTY, MINNESOTA	THIS MAP/DOCUMENT IS A TOOL TO ASSIST EMPLOYEES IN THE PERFORMANCE OF THEIR JOBS. YOUR PERSONAL SAFETY IS PROVIDED FOR BY USING SAFETY PRACTICES, PROCEDURES, AND EQUIPMENT AS DESCRIBED IN THE SAFETY TRAINING PROGRAMS AND MANUALS. ENERGY SUPPLY ENGINEERING & CONSTRUCTION	UNIT 0		REV
														DWG NO.	MANUFACTURER	DESCRIPTION			COLLECTOR SUBSTATION CONTROL		
														52/CAP2-1, 52/CAP2-2 & 52/REA2-1 SH 2-5		34.5KV BUS #2					
	REV. A - ISSUED FOR REVIEW: 8-9-21																		METERING AND RELAYING DIAGRAM	NH-XXXXX- 2-3	



NOTES
 1. XFMR T1 ATS AND XFMR T2 ATS ARE PRE-INSTALLED ON TRANSFORMER
 2. 52/VAR1 WILL BE BLOCKED FROM CLOSING BY THE 87V/VAR1 RELAY WHEN THE DOWNSTREAM CAP AND REACTOR SWITCHERS ARE CLOSED.

NO	REVISION	ZONE	DATE	BY	CHK	ENG	NO
	REV. A - ISSUED FOR REVIEW: 8-9-21						

REVISION	ZONE	DATE	BY	CHK	ENG

REFERENCE DRAWINGS		
DWG NO.	MANUFACTURER	DESCRIPTION

XcelEnergy
 NORTHERN STATES POWER COMPANY
 XXXXXXX WIND FARM
 XXXXXX COUNTY, MINNESOTA

DWN:	DATE:	CHK:	DATE:
ENG:	DATE:	CHK:	DATE:
PM:	DATE:	PROJ. NO.:	
APVD:	DATE:	SCALE: NONE	

THIS MAP/DRAWING IS A TOOL TO ASSIST EMPLOYEES IN THE PERFORMANCE OF THEIR JOBS. YOUR PERSONAL SAFETY IS PROVIDED FOR BY USING SAFETY PRACTICES, PROCEDURES, AND EQUIPMENT AS DESCRIBED IN THE SAFETY TRAINING PROGRAMS AND MANUALS.

ENERGY SUPPLY
 ENGINEERING & CONSTRUCTION

UNIT 0
 COLLECTOR SUBSTATION CONTROL
 34.5KV BUS #1
 METERING AND RELAYING DIAGRAM

NH-XXXXX-2-4

